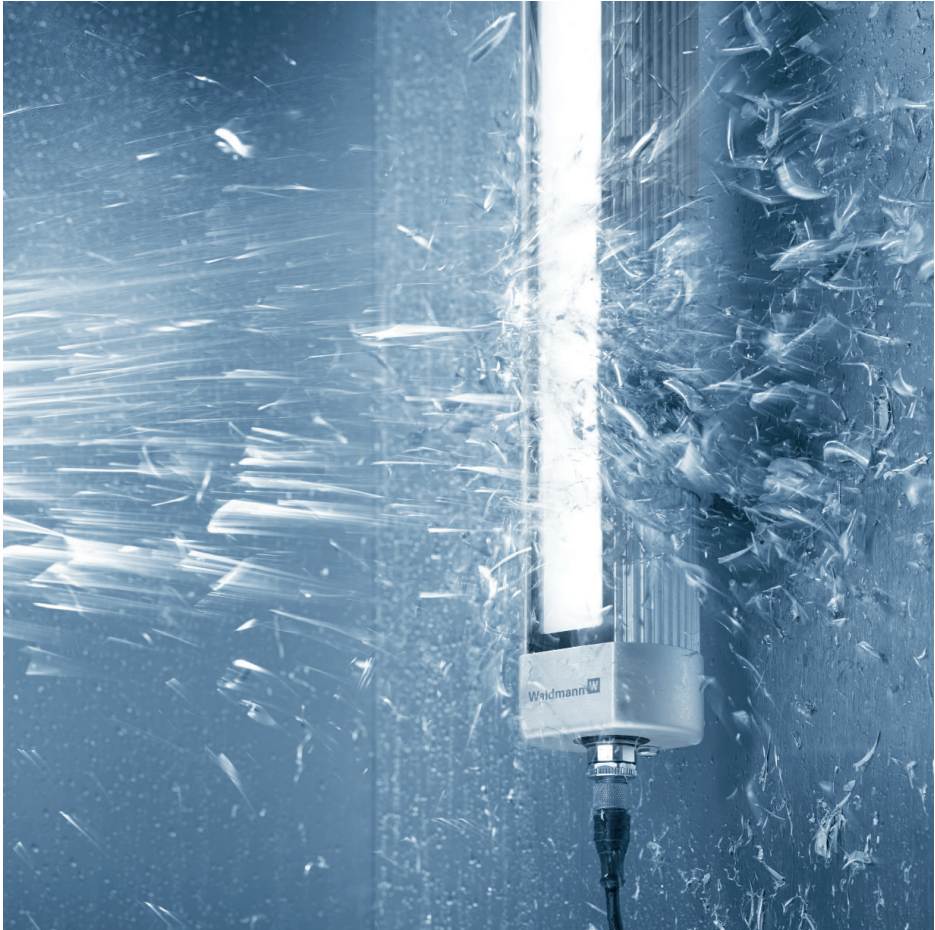
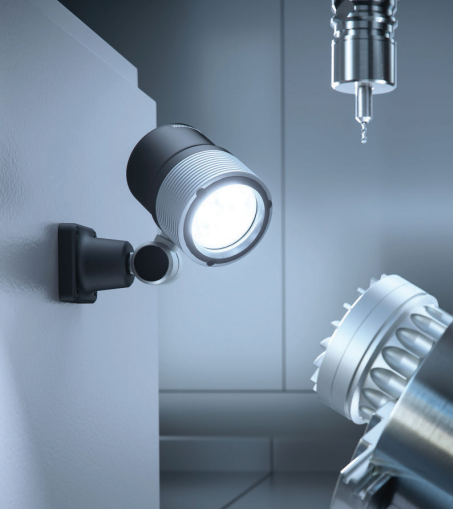


INDUSTRIAL LED HIGHLIGHTS



LINURA.edge

HIGH OUTPUT LINEAR LED

- Slim design measures less than one inch in diameter
- M12 connection for easy operation
- Strong aluminum profile and PMMA acrylic
- Ten standard lengths ensure that there is an ideal fixture for virtually any space
- The unique sealing concept used for the lens and side components offer enhanced resistance to high ambient temperatures, liquid and dust (IP54)
- The very latest in LED technology prevails with more than 170 lumens per watt, allowing very high light levels from fewer or smaller fixtures.
- ETL/cETL

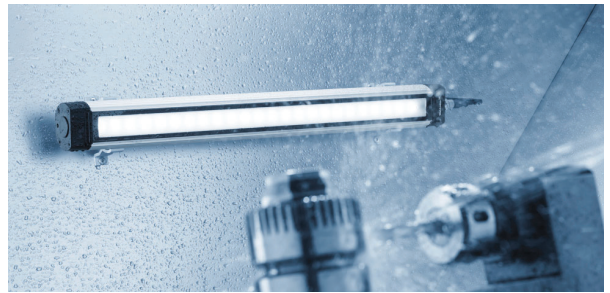


MACH LED PLUS.seventy

MACH LED PLUS.forty

70 MM AND 40 MM HIGH OUTPUT LINEAR LED

- Up to 70% energy savings compared to fluorescent tube luminaires
- Able to withstand extreme ambient heat up to 122°F
- Many lengths and light output options to choose from
- Thru-wire models available for connecting multiple fixtures
- Easy connection via M12 cable assembly (included)
- Various bracket options for simple installation (sold separately)
- Flicker-free without dangerous stroboscopic effect
- IP67 protection against oils, water, lubricants etc.
- Rugged anodized aluminum housing, 4 mm safety glass
- Impervious to mechanical vibration
- 60,000 hours maintenance-free operation
- ETL/cETL



RL70LE

LED MACHINE TOOL TUBE LIGHT

- New LED generation designed to update conventional fluorescent industrial tube lights
- Premium LED materials and technology
- Color temperature: 5000 K for clear, bright vision
- Protective-grade borosilicate glass versions resist coolants, lubricants and other volatile liquids
- Strong polycarbonate option ideal for food industry and outdoor applications
- Clear acrylic is strong for machining and other industrial environments
- IP67 protection against oils, water, lubricants, etc.
- ETL/cETL



ROCIA.focus

VERSATILE LED MACHINE LIGHT

- Designed for the most volatile industrial environments
- Double-arm, gooseneck and pivoting head styles available
- High-resistance coating against heat, wear and corrosion
- Protection rating IP65 (arm models) and up to IP67 (pivoting head model)
- Robust anodized aluminum housing
- 3 mm thick safety glass
- 60,000 hour maintenance-free operation
- Precision optics in 10° or 40° beam angles
- Able to operate at 12-40 VDC, 12-28 VAC or 100-240 VAC (for arm models only)
- On/off or continuous dimming capability
- ETL/cETL



RAPTOR

VERSATILE LED MACHINE LIGHT

- Robust die-cast aluminum housing
- Several mounting options
- 3 mm thick safety glass
- 100-240 VAC or 22-26 VDC
- Gooseneck or pivoting head models available
- Withstands temperatures up to 104°F
- 50,000 hours of maintenance-free LED service life
- Protection rating IP65 (gooseneck model) and up to IP67 (pivoting head model)
- Universal base included
- ETL/cETL



HEAD LED

SURFACE MOUNT LED FLOOD

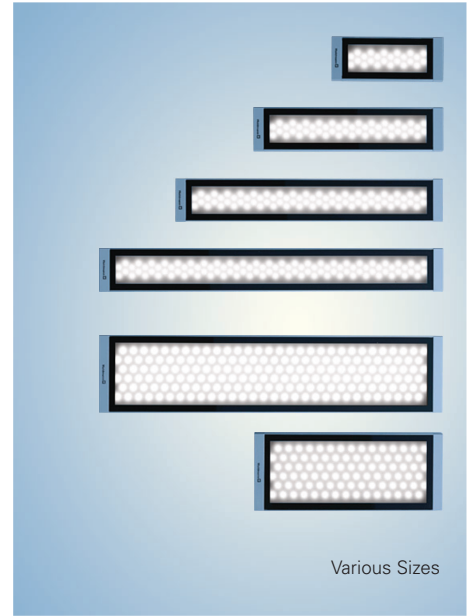
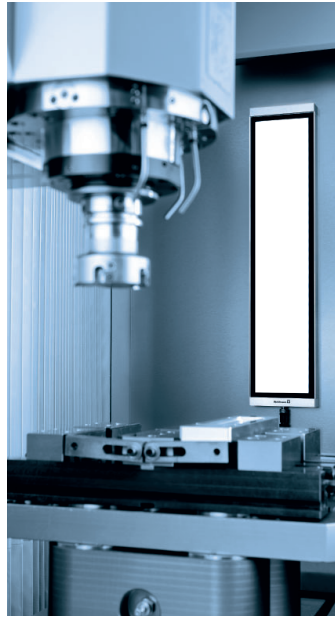
- Small footprint – 1.9" diameter
- Available in 70° or 100° beam angles
- Designed for wide area light distribution
- Rugged anodized aluminum housing
- High resistance to coolants and lubricants
- 16-32 VDC
- 50,000 hours maintenance-free operation
- IP67 protection against oils, water, lubricants, etc.
- ETL/cETL



LUMATRIS

HIGH OUTPUT LED

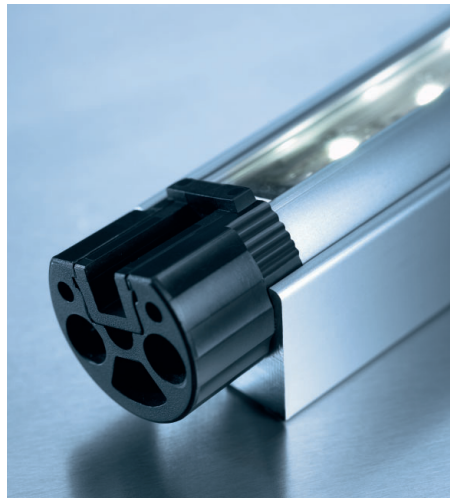
- Six sizes for customized fit
- Easy rear or side connection options via M12 cable assembly (included)
- Surface or flush mounting options
- Narrow beam or wide flood light options
- Suitable for ambient temps up to 122°F
- Protection rating IP68-1m and IP69K in accordance with DIN 40050-9
- Designed for use with coolants and lubricants
- Rugged anodized aluminum housing, 4mm safety glass
- Impervious to mechanical vibration
- 22-26 VDC
- 50,000 hours maintenance-free operation
- ETL/cETL



SLIM LED

COMPACT LINEAR LED

- Small, compact linear housing less than 1" (22 mm) wide
- Five lengths: 7.7", 13.2", 24.3", 35.3", 46.3"
- Adjustable version rotates 45°
- IP67 rated (although not recommended for use with coolants or lubricants)
- Aluminum extruded housing
- 22-29 VDC
- 50,000 hours maintenance-free operation
- ETL/cETL



FLAT LED

HIGH OUTPUT LED FLOOD

- Slim housing depth of only .8" (20 mm)
- Hardened anodized aluminum housing protects against heat, wear and corrosion
- Surface or flush mounting options
- Precision optics provide 60° beam spread
- High pressure protection (IP69K)
- Designed for use with coolants and lubricants
- 4mm safety glass
- Impervious to mechanical vibration
- 10-40 VDC or 10-30 VAC
- 50,000 hours maintenance-free operation
- ETL/cETL



MLD LED MAGNIFIER

- 3.5 diopter (1.88x) magnification
- 6.3-inch diameter magnifying lens made from strong PMMA acrylic
- Ergonomic design with 2D head joint
- Color rendering index (CRI) > 80
- Color temperature: 5000 K
- Continuously dimmable 100% to 10%
- Strong anodized aluminum housing
- Includes table clamp (0 – 2.7 inches)
- ETL/cETL



OMNIVUE LED LED MAGNIFIER

- Magnifying lens tilts independently from the light source
- 3 diopter (1.75X) stadium-style lens
- Lens dimensions 6.4" x 4.1"
- Optional add-x lenses are available
- Two arm lengths available: 35" or 43"
- 120 VAC; includes 11-foot cord and plug-in transformer
- ETL/cETL
- ESD versions available



TEVISIO LED MAGNIFIER

- 6" diameter magnifier with 48 LED surround
- 3.5 diopter (1.88X) or 3.5d + 8d (3X) magnification options
- On/off, dimming and segment switching
- Spring-balanced arm and multi-directional head joint
- 100-240 VAC, 50/60 Hz operation
- 12-foot cord with US plug
- ETL/cETL
- ESD versions available



RING LED LED MAGNIFIER

- 63 high-output LEDs for four times more light than traditional fluorescent lights
- Optical-grade 6 diopter (2.3X) lens
- 4.8" diameter head, 2.8" diameter lens
- Touch-switch for on/off operation
- Industrial-grade gooseneck arm – strong even after 20,000 movements
- Plug-in transformer for 100-240 VAC operation



TAMETO

WORKPLACE SYSTEM LUMINAIRE

- Latest LED technology and ergonomic optics
- Several sizes and light output selections
- Up to 60% energy savings and 40% higher luminance when compared to conventional fluorescent lamps
- Color temperature: 4000 K
- Glare- and flicker-free for added safety
- Easy access to touch panel for on/off switching
- High lumen output, low power consumption
- Anodized aluminum housing
- 100-240 VAC, 50/60 Hz
- Sealed design for protection from outside elements (IP20)
- 10-foot cord and plug included
- ETL/cETL



Fixed

TANEO

LED SYSTEM TASK LUMINAIRE

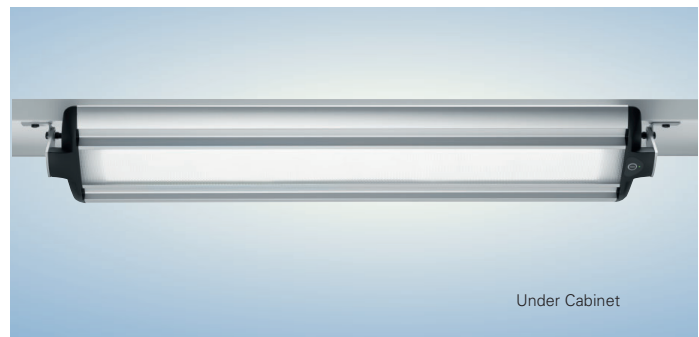
- Three sizes and light output selections
- Spring-balanced arm or system-mounted versions
- Easy access to touch panel for dimming and on/off switching
- 3D head joint for ergonomic ease of use
- Color temperature: 4000 K or 5000 K
- Glare-free satine or clear prismatic lens
- Clip-on magnifier 3.5 diopters (1.88X) available
- 50,000 hours maintenance-free operation
- Anodized aluminum housing
- 100-240 VAC, 50/60 Hz
- ESD versions available
- 10-foot cord included
- ETL/cETL



Various Sizes



Articulating Arm



Under Cabinet

WLA

WORKPLACE SYSTEM LUMINAIRE

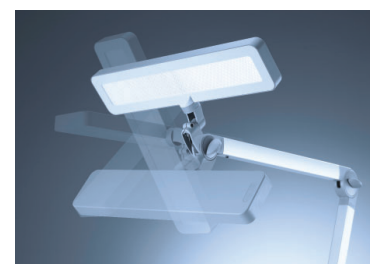
- LED overhead workstation light
- 50,000 hours of maintenance-free operation
- Through-wire capability for daisy-chaining
- Housing of anodized aluminum
- Color temperature: 5000 K
- Superb light quality CRI > 80
- Built-in Wieland GS18/3 connector/socket
- T-Bracket set included
- ETL/cETL



ALD

LED TASK LIGHT

- Functional and easy-to-use tough LED task light
- On/off and dimming switch conveniently located on the head
- Ergonomically friendly for working comfortably
- Ideal for environments requiring lengthy periods of work time
- Wide area illumination and glare-free lens to combat tired eyes
- Color rendering >80
- 5000K color temperature
- Perfectly balanced, anodized aluminum, adjustable double arm
- 3D head-joint enables 180 degrees turn for ease of use
- Ideal for assembly applications, inspection areas or any other industrial workstation



HEADQUARTERS GERMANY

Herbert Waldmann GmbH & Co. KG
Postfach 50 62
78057 VILLINGEN-SCHWENNINGEN

GERMANY

Telephone +49 7720 601-0
Telephone +49 7720 601-100 (Sales)
Fax +49 7720 601-290
www.waldmann.com
sales.germany@waldmann.com

FRANCE

Waldmann Eclairage S.A.S.
Zone Industrielle
Rue de l'Embranchement
67116 REICHESTETT
FRANCE
Telephone +33 3 88 20 95 88
Fax +33 3 88 20 95 68
www.waldmann.com
info-fr@waldmann.com

ITALY

Waldmann Illuminotecnica S.r.l.
Via della Pace, 18 A
20098 SAN GIULIANO MILANESE (MI)
ITALY
Telephone +39 02 98 24 90 24
Fax +39 02 98 24 63 78
www.waldmann.com
info-it@waldmann.com

THE NETHERLANDS

Waldmann B.V.
Lingewei 19
4004 LK TIEL
THE NETHERLANDS
Telephone +31 344 631019
Fax +31 344 627856
www.waldmann.com
info-nl@waldmann.com

AUSTRIA

Waldmann Lichttechnik Ges.m.b.H.
Gewerbepark Wagram 7
4061 PASCHING/LINZ
AUSTRIA
Telephone +43 7229 67400
Fax +43 7229 67444
www.waldmann.com
info-at@waldmann.com

SWEDEN

Waldmann Ljusteknik AB
Skebokvarnsvägen 370
124 50 BANDHAGEN
SWEDEN
Telephone +46 8 990 350
Fax +46 8 991 609
www.waldmann.com
info-se@waldmann.com

SWITZERLAND

Waldmann Lichttechnik GmbH
Benkenstrasse 57
5024 KÜTTIGEN
SWITZERLAND
Telephone +41 62 839 1212
Fax +41 62 839 1299
www.waldmann.com
info-ch@waldmann.com

UNITED KINGDOM

Waldmann Lighting Ltd.
10 Millfield House
Croxley Green Business Park
WATFORD WD18 8Y
Telephone +44 1923 800030
Fax +44 1923 800016
www.waldmann.com
E-Mail info-uk@waldmann.com

USA

Waldmann Lighting Company
9 W. Century Drive
WHEELING, ILLINOIS 60090
USA
Telephone +1 847 520 1060
Fax +1 847 520 1730
www.waldmannlighting.com
waldmann@waldmannlighting.com

CHINA

Waldmann Lighting (Shanghai) Co. Ltd.
199 Changjian Road, Baoshan
SHANGHAI, PRC 200949
Telephone +86 21 5169-1799
Fax +86 21 3385-0032
www.waldmann.com
E-Mail info-cn@waldmann.com

SINGAPORE

Waldmann Lighting Singapore Pte. Ltd.
77A Neil Road
SINGAPORE 088903
Telephone +65 6275 8300
Fax +65 6275 8377
www.waldmann.com
E-Mail sales-sg@waldmann.com

